



DRUG & GUN ENFORCEMENT UNIT

Fire Investigators Conference

Constable Gary Williams

Constable Charles Campbell

Crystal Methamphetamine



Crystal Methamphetamine

One Pot / Shake and Bake method if cooking meth

WARNING

Combining these chemicals can result in fire, explosion, injury, death, or arrest.

I do NOT use illicit narcotics, nor do I condone the use of illicit narcotics.

This document is for informational purposes only. I take no responsibility for anyone who misuses this information and blows himself up, burns down a structure, or gets arrested.

DO NOT TRY THIS AT HOME.

****DO NOT DO THIS INDOORS****

Now, on with the show.

You will need the following "Hardware"

- 2 2-liter bottles (Clean & dry, with lid)
- 1 1-liter bottle (Clean & dry, with lid)
- 1 20oz bottle (Clean & dry, with lid)
- Approx 18" aquarium tubing
- Needle-nosed pliers
- Small pipe cutter (Or snips)
- Measuring cups (1/3 and 1 cup size)
- Funnel
- Small Tupperware container with lid
- Baggies
- Utility knife or razor blade
- Coffee filters

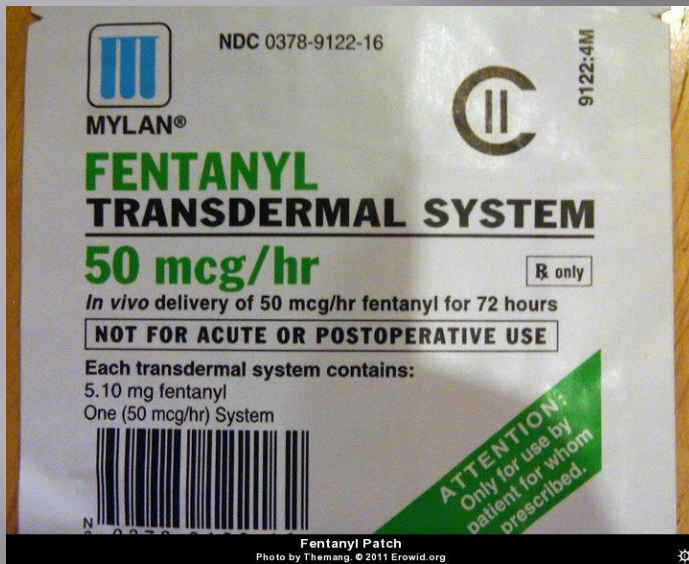
Chemicals needed

1. 1/3 cup Ammonium Nitrate (Get by cutting open cold packs. It's the little white balls. Be careful what you buy, some cold packs are ammonium nitrate-free. Alternatively you can sometimes find ammonia nitrate prills at hydroponics stores sold as a bulk fertilizer.
2. 1/2 cup 100% Lye (aka Sodium Hydroxide. Available at hardware stores in the drain cleaner section. - Drano Crystals, or any other powdered lye works)
3. 3 cups Coleman Camp Fuel (Engine starting fluid [diethyl ether], or VM&P naphtha can also be used)
4. 3x Lithium strips (Get by cutting open Energizer AA Lithium batteries- Search YouTube for - Get Lithium Metal From an Energizer Battery)
5. 100ml NP solvent of your choice (Xylene or MEK is recommended - easily found at your local hardware store in the paint section)
6. 3-4 boxes 120mg 12-hour pseudoephedrine HCl (PSE). The highest count you can find. (Sudafed or a generic equivalent. MAKE SURE PSE IS THE ONLY ACTIVE INGREDIENT)
7. about 1/3 cup iodized salt
8. 4 capfuls sulfuric acid (Available as liquid drain cleaner.) OR muriatic acid (Also sold at hardware stores usually found around the paint section)
9. Denatured alcohol or Isopropyl alcohol 99%
10. 1/8 cup of distilled water (Poland Spring or any bottled water can also be used)

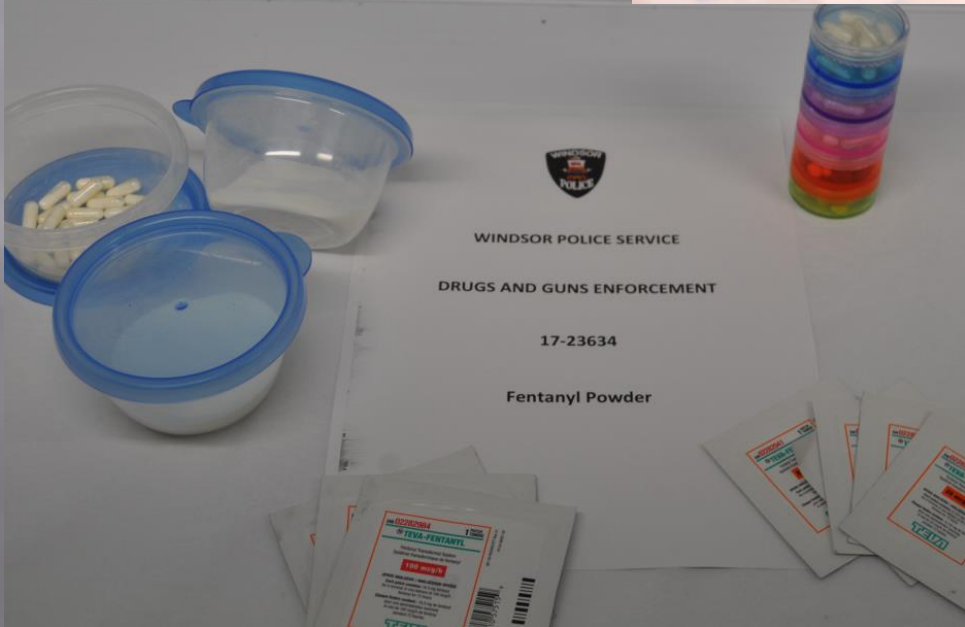
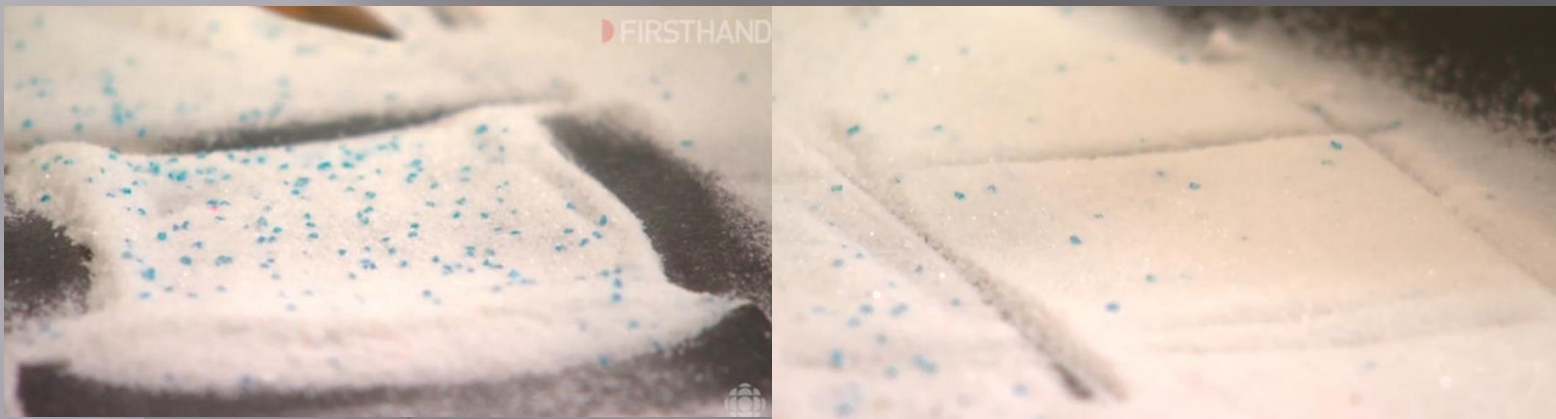
Crystal Methamphetamine One Pot Method

- ▣ https://www.youtube.com/watch?v=0kq7zj8Kd_Q

Fentanyl



Fentanyl



Cocaine



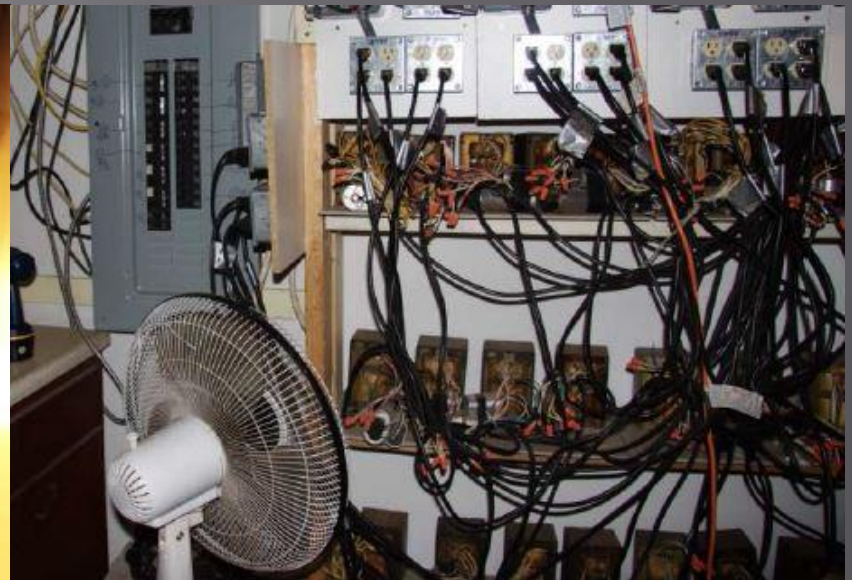
Crack Cocaine



Cannabis Marihuana



Cannabis Grow Operation



Cannabis Marihuana



Cannabis Extraction Lab



Cannabis Extraction Lab



Detroit Street July 13 2013

North Yard 09:27:20

Cannabis Extraction Lab



2 males extracting cannabis resin from plant material with butane.

Mother and 1 year old also present at time

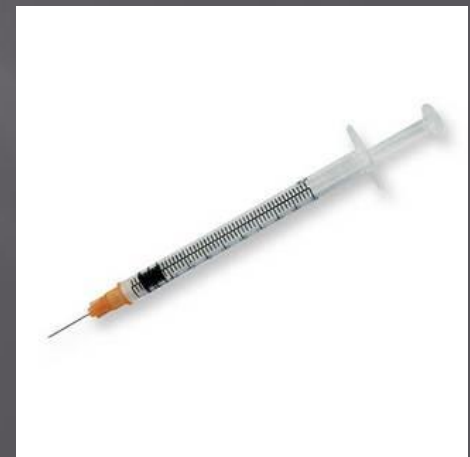
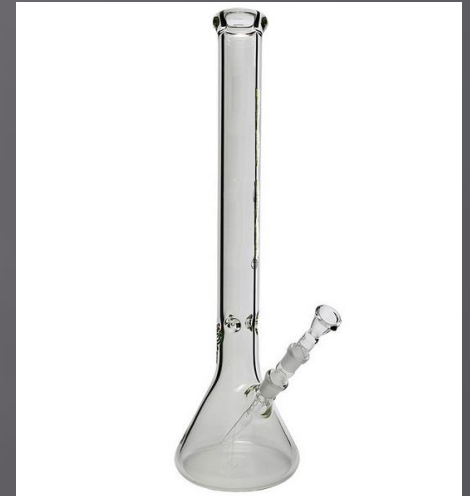
Guilty plea to Arson by negligence and Production of controlled substance

18 mos probation and \$5000 fine

Weapons



Indicia of Drug Use



Questions??

Constable Gary WILLIAMS #10653

519-981-9512

garyjwilliams@police.windsor.on.ca

Constable Charles CAMPBELL #13817

519-982-0637

ccampbell@police.windsor.on.ca

DIGS Office

519-255-6700 - Ext. 4361